

# Village of Rye Brook, NY

## Planning Base Studies

### Utilities

## County Sewer Districts


### Legend

#### County Sewer Districts


 Blind Brook

 Mamaroneck

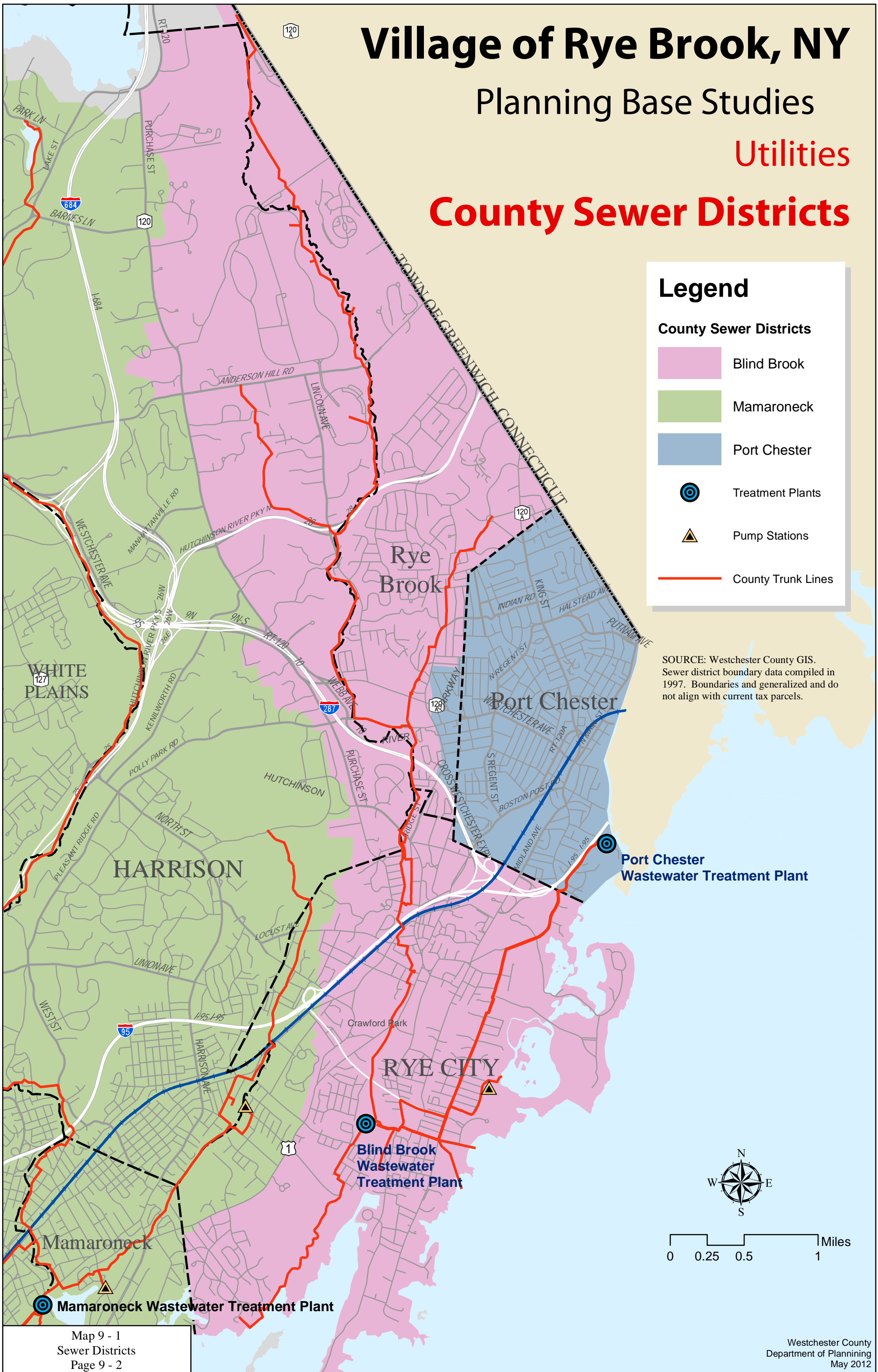
 Port Chester

 Treatment Plants

 Pump Stations

 County Trunk Lines

SOURCE: Westchester County GIS.  
Sewer district boundary data compiled in 1997. Boundaries are generalized and do not align with current tax parcels.



**Port Chester Wastewater Treatment Plant**

**Blind Brook Wastewater Treatment Plant**

**Mamaroneck Wastewater Treatment Plant**